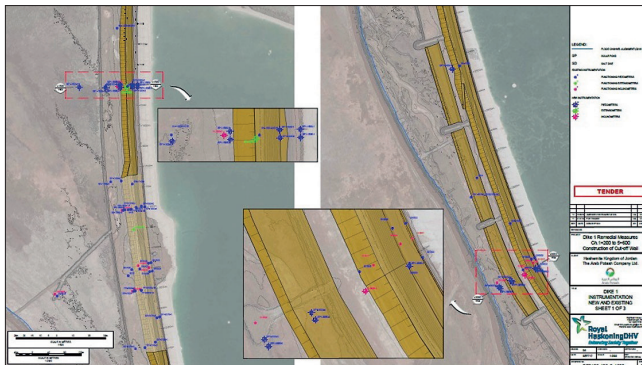
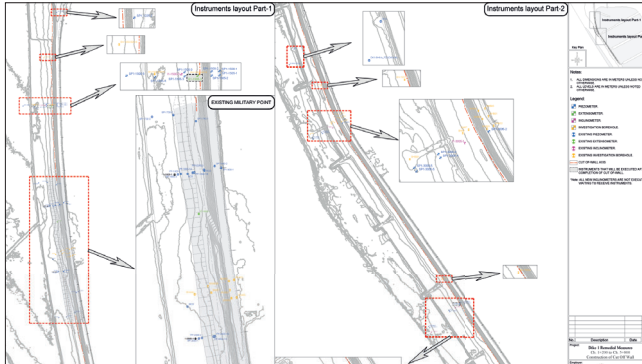


Project execution example Arab Potash Company, Jordan

Construction of 112,000 m² of cut-off wall with sheet pile wall embedded in plastic concrete over a length of 4.2 km for the Arab Potash Company in Jordan.

Scope of monitoring services

- Groundwater monitoring
- Extensometer measurement
- Protection and enhancement of new and existing instrumentation
- Processing and documentation



Your contact

Peter Banzhaf

Tel.: +49 8252 97-4266

peter.banzhaf@bauer.de



BAUER Monitoring & Prognosis

Wall monitoring and prognosis
system



BAUER Spezialtiefbau GmbH

BAUER-Strasse 1
86529 Schrobenhausen

Germany

Tel.: +49 8252 97-0

www.bauer.de

903.188.2 BST 08/2019



BAUER SPEZIALTIEFBAU

Our offer

With more than 50 years of experience in planning, calculating and executing safe excavation pits, and over 35 years of experience constructing cut-off walls for dams and dikes, we offer a comprehensive service-package that allows owners to continuously safeguard and monitor their installations.

Our goal

Continuous monitoring of structural conditions during operation and reliable prognosis for:

- Embankment dams
- Gravity dams / Barrages
- Dikes
- Landfill enclosures
- Open pit mines



Our comprehensive service from one source

- Planning and delivery of the project-specific optimal monitoring package
- Installation, monitoring and servicing of instrumentation
- Analysis and provision of measurement data in a web-based format on the computer or a mobile device such as a mobile phone or tablet
- Prognosis of the safety condition of the wall and wall behavior
- Provision of a warning system

How you benefit

- Increased safety for operators of the installation and residents during construction and operation
- Reduced remediation costs due to early detection of damage progression



BAUER Monitoring & Prognosis

Instrumentation options

- BAUER load cell
- Plumb bob
- Chain inclinometer
- Pore water pressure sensor
- Earth pressure sensor
- Extensometer
- Pressure sensors
- Concrete deformation sensor
- Fiber optics
- Photogrammetry
- Tachymetric monitoring

Calculation and forecast

- Data collection
- Data processing
- Model calculation using finite elements
- Model analysis using advanced analytics
- Prognosis and recommended actions

Web-based visualization

for example using

- 3D representation of temperature distribution
- Load cell monitoring